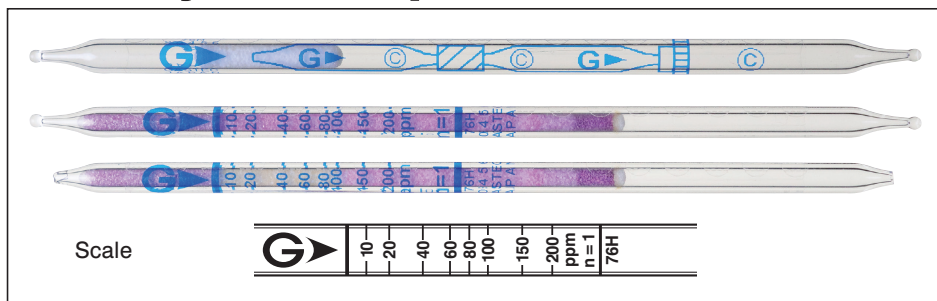


Tetrahydrothiophene C₄H₈S

No.76H



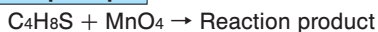
Performance

When used, these tubes are to be connected.

Measuring range	10 to 200 ppm
Number of pump strokes	1 (100 mL)
Correction factor	1
Sampling time	1 min

Detecting limit :	2 ppm (1 pump stroke)
Colour change :	Pink → Pale yellow
Operating conditions :	Temperature 0 to 40 °C (32 to 104 °F) correction used Relative humidity 0 to 90 % correction not used
Relative standard deviation :	10 % (for 10 to 60 ppm), 5 % (60 to 200 ppm)
Tube quantity and number of tests per box :	10 tubes for 5 tests
Shelf life :	24 months

Reaction principle



Possible coexisting substances and their interferences

Substance	Concentration	Interference	Changes colour by itself to
Hydrogen sulphide	≧ 300 ppm	No	} Pale pink (whole layer)
Ethyl mercaptan	≧ 3 ppm	No	
Ethylene	≧ 5000 ppm	No	
Propylene	≧ 2000 ppm	No	
Methanol	≧ 2000 ppm	No	

Calibration gas generation

Diffusion tube method