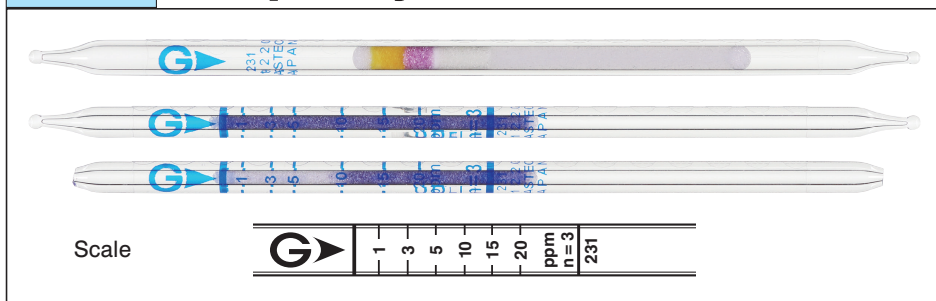
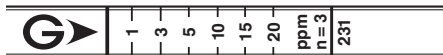


Pyrotube

# Sulphuryl Fluoride $\text{SO}_2\text{F}_2$ No.231



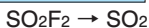
Scale



## Performance

Measuring range	1 to 20 ppm
Number of pump strokes	3 (300 mL)
Correction factor	1
Sampling time	6 min
Detecting limit :	0.4 ppm (3 pump stroke)
Colour change :	Bluish purple → White
Operating conditions :	Temperature 0 to 35 °C (32 to 95 °F) correction used Relative humidity 0 to 90 % correction not used
Relative standard deviation :	10 % (for 1 to 20 ppm)
Tube quantity and number of tests per box :	9 tubes for 4 tests
Shelf life :	24 months

## Reaction principle



## Possible coexisting substances and their interferences

Substance	Concentration	Interference	Changes colour by itself to
Sulphur dioxide	$\geq 0.04$ ppm	+	White ( $\geq 0.05$ ppm)
Carbon dioxide	$\leq 5$ %	No	No
Chloropicrin (CP)	$\leq 50$ ppm	No	No ( $\leq 50$ ppm)
Methyl isothiocyanate (MITC)	$\leq 50$ ppm	No	No ( $\leq 50$ ppm)
Low oxygen environment		+	No

## Calibration gas generation

High pressure gas cylinder method